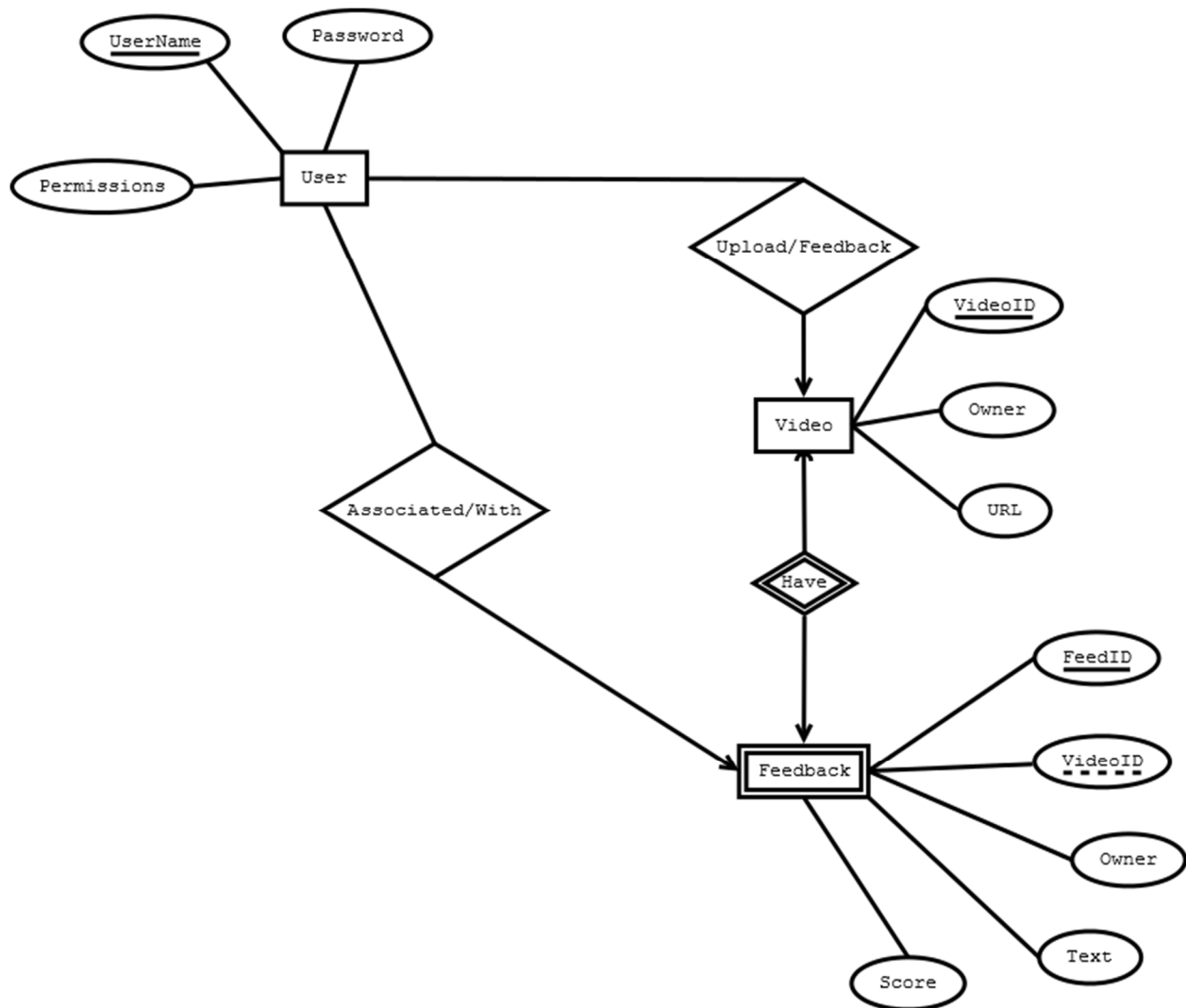


## ER Model



## BCNF DB Schema

All schema are Boyce-Codd Normal Form, such that for all dependencies  $x \rightarrow y$ ,  $x$  contains only keys, and  $y$  contains no keys. BCNF design avoids unnecessary redundancy and prevents the generation of anomalies.

User( Username, Password, Permissions)

Video( VideoID , Owner, URL)

Feedback ( FeedID , VideoID, Owner, Text, Score)